

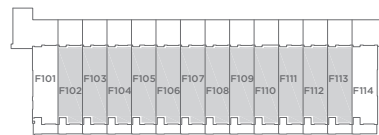
the jackson towns

The Caledonia

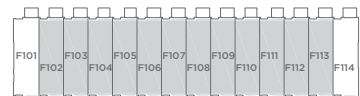
Three-Storey Town

Model G

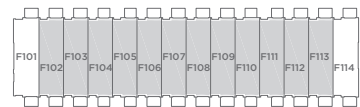
Suite area: 1,644 sq. ft.
 Outdoor area: 317 sq. ft.
Total area: 1,961 sq. ft.



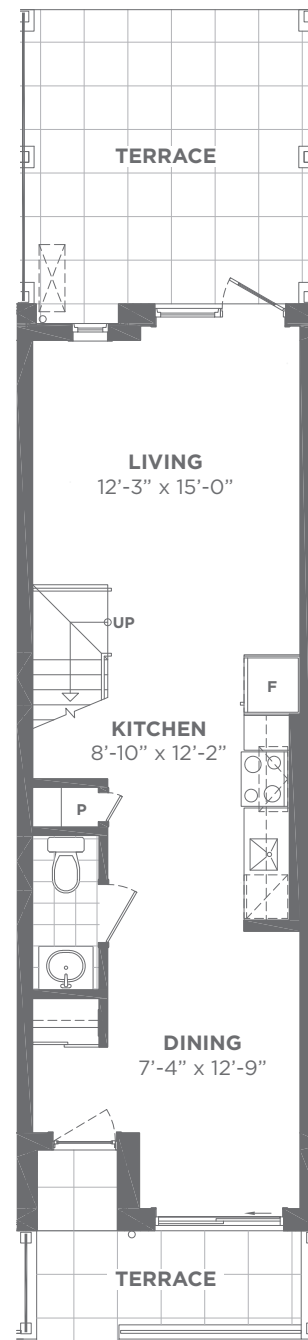
Building F - Ground Floor



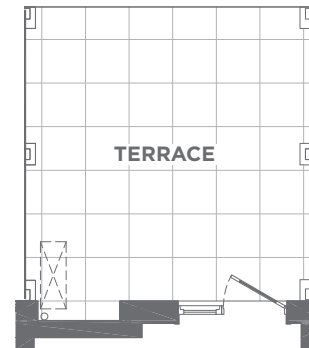
Building F - Second Floor



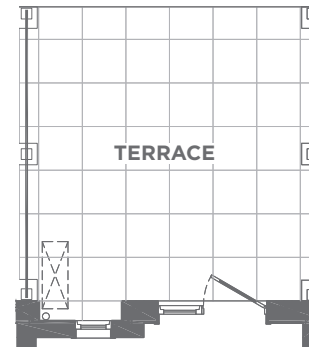
Building F - Third Floor



Ground Floor



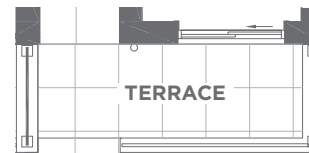
Units F105 & F111



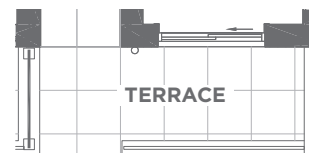
Units F104 & F110

Suite area: 1,644 sq. ft.
 Outdoor area: 307 sq. ft.
Total area: 1,951 sq. ft.

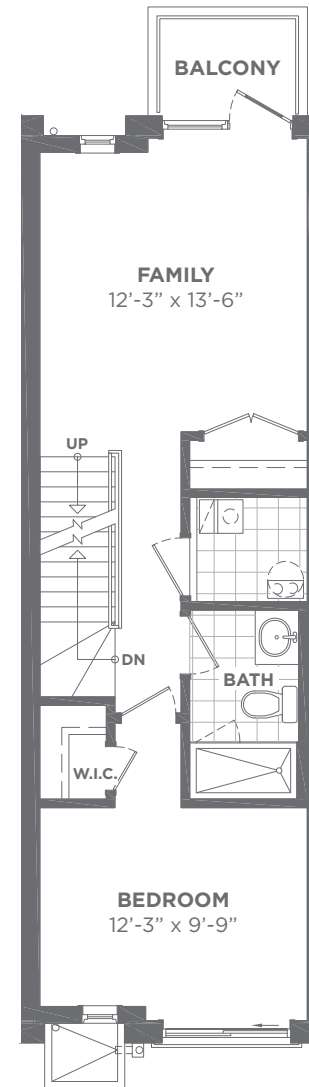
Suite measurements above apply only to units F104, F105, F110, & F111.



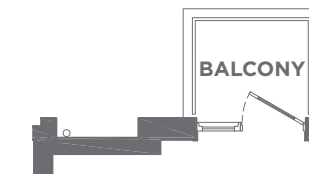
Units F105 & F111



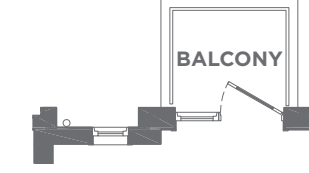
Units F104 & F110



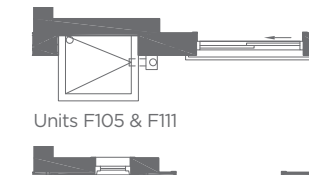
Second Floor



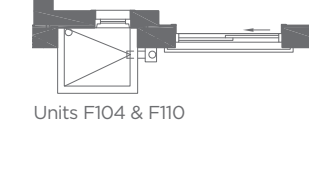
Units F105 & F111



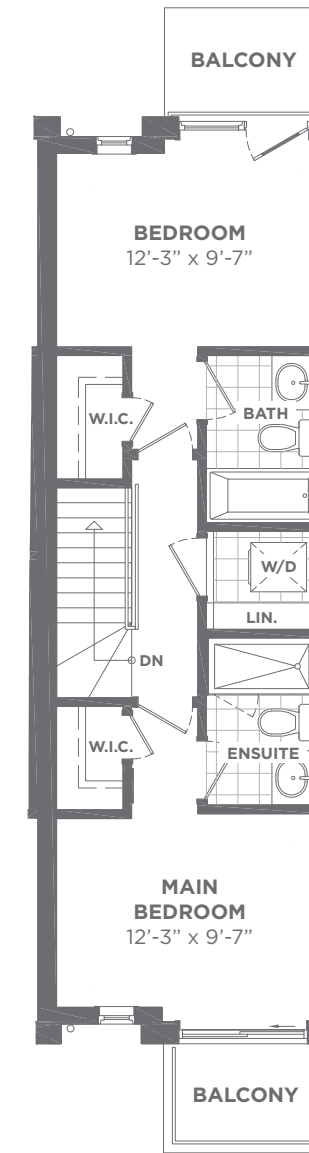
Units F104 & F110



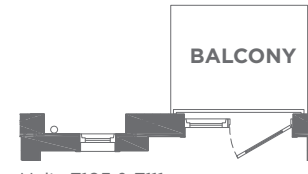
Units F105 & F111



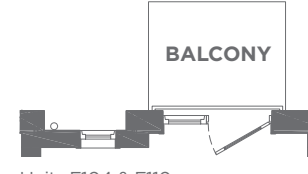
Units F104 & F110



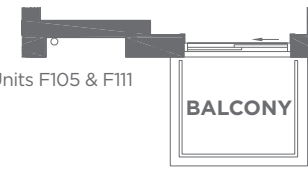
Third Floor



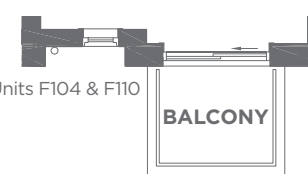
Units F105 & F111



Units F104 & F110



Units F105 & F111



Units F104 & F110

All areas and stated room dimensions are approximate. Note: Actual usable floor space may vary from the stated floor area. Floor area is measured in accordance with the HCRA directive on floor area calculations. Size and location of windows may vary. The purchaser acknowledges that the actual unit purchased may be a reversed layout to the plan shown. Illustration is artist's concept. E. & O. E. Outdoor area will vary depending on suite location within the building. Please speak with a Sales Representative for details.